



Ubertec®

Mining Solutions.



www.ubertec.ind.br

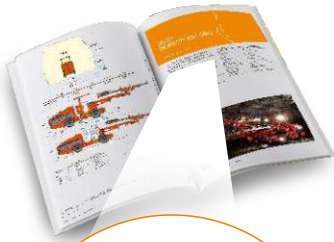
HOW TO PURCHASE

Reforms

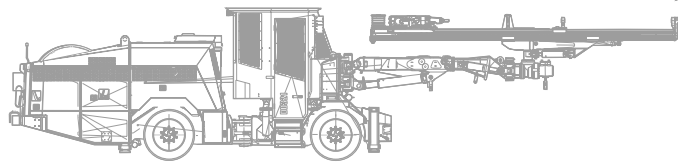
Spare parts

Special projects

Manufacturing



1°



With the equipment catalog in hand, locate machine's PN, Brand, and Model.

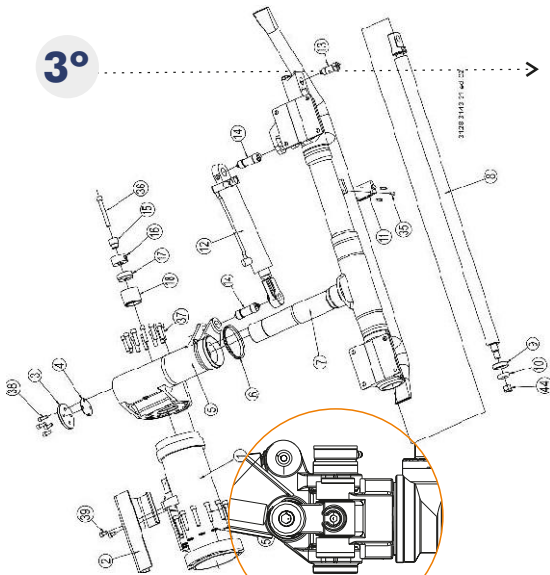
BOOM / BOM

Ref no	Part no Detaljn	Antal
131	3128 3144 26	1
132	3128 3144 27	1
150	-	1
151	-	1
161	-	-
162	-	-
	3128 0940 0	-

2°

Please provide Ubertec with the PN, brand, and model of the Equipment.

3°



After identifying the equipment, send the list of PNs of subassembly components to be recovered or manufactured.

RT / BOMDEL

no	Part no Detaljn	Ant
1	3128 3126 44	1
2	3128 3140 86	1
3	3125 4941 00	1
4	3125 4924 00	1
5	3128 3146 44	1
6	0666 8096 03	-
7	3128 3141 63	-
8	3128 2592 43	-
9	3153 8650 00	-
10	3122 0309 00	-



4°

If you need, you can consult our ONLINE portfolio at www.ubertec.ind.br and get the PN numbers

If you can't find the description or the desired PN, contact our commercial department at comercial2@ubertec.ind.br



MODERN INDUSTRIAL PARK AND INTEGRATED LOGISTICS

Equipped with state-of-the-art machinery and **INTEGRATED LOGISTICS**, we have the **CAPACITY TO SERVE QUICKLY AND EFFECTIVELY** throughout both national and international **TERRITORY**

Main office

Uberlândia-MG



Branch office

Petrolina-PE



Come visit us, bring your equipment to Ubertec.



With a commercial presence and partnership in Germany, Peru, China and South Africa.



We have a complete structure, extensive knowledge and experience to meet the highest quality levels required by the sector, providing advantages of nationalization of parts, high technology, speed and confidence that your company requires for efficient and continuous productivity.

Manufacture and Nationalization of Parts



Expanding
Shaft



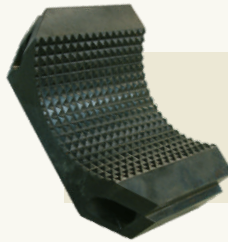
Bearing



Bronze
Bushing



Drawer



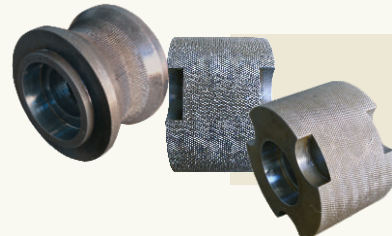
Jaw



Support and
Chestnut



Pins



Pulley

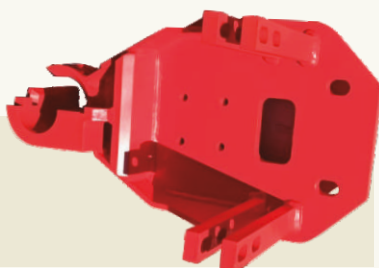


Front Centralizer
Launches TF

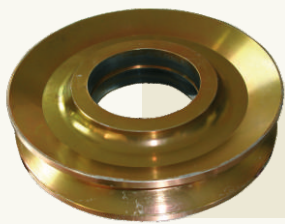


Support Half

Front Centralizer
Spear TFX



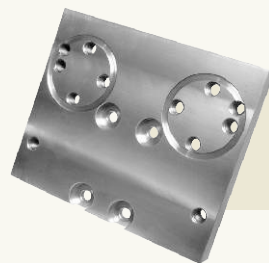
Manufacture and Nationalization of Parts



Pulley



Cradle
Plate



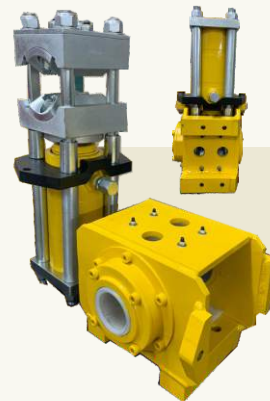
Cradle
Plate



Holder
Set



Pin



Hod Holder
Assembly



Sliding
Piece and
Holder



Cubex
Manipulator
Arm



Distributor

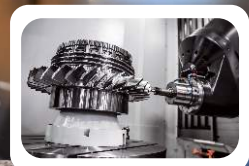


Bushings



Sliding
Piece

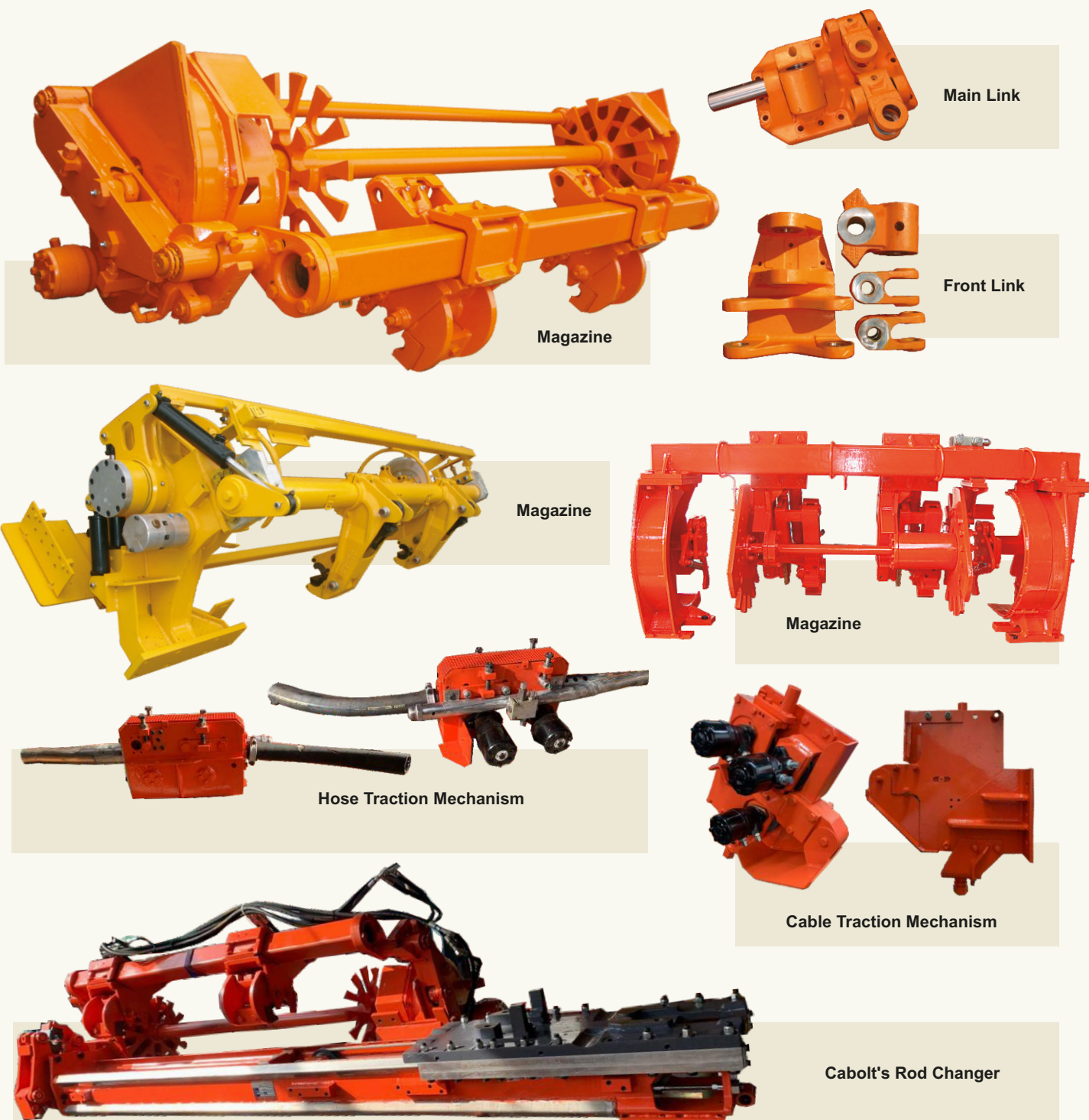
INNOVATION AND QUALITY



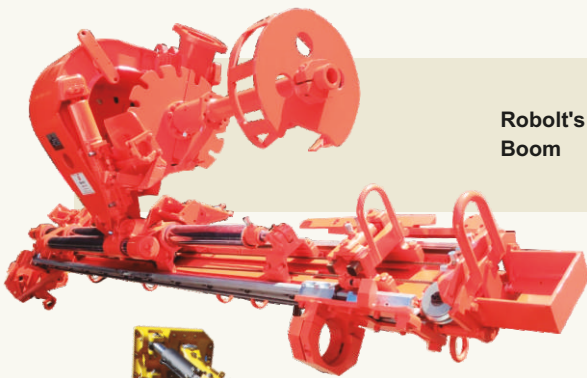
Attentive to market trends and with a focus on continuous improvement of manufacturing and recovery processes, we invest in partnerships with universities in the field of material research to ensure the best durability and resistance suitable for each type of situation

Recovered Subassemblies

In-house Manufacture Subassemblies



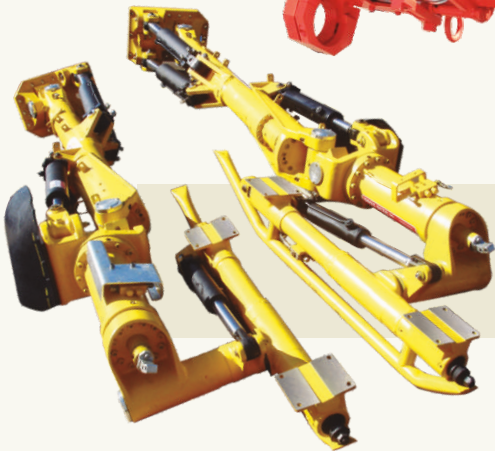
Recovered Subassemblies or In-house Manufacture



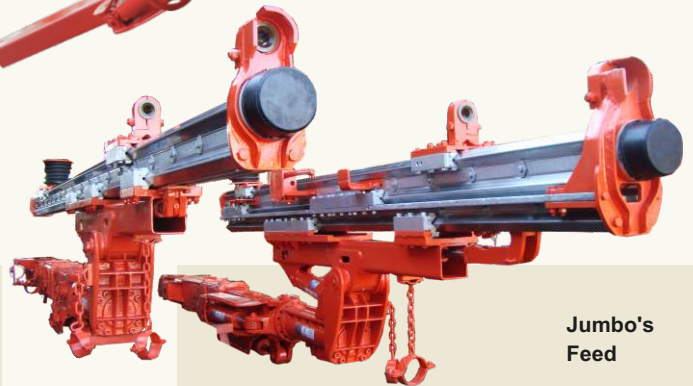
Robolt's
Boom



Boom of
Jumbo Sandvik



Jumbo's
Feed



Jumbo's
Feed



Basket
Cage



Atlas Copco
Jumbo Cab



Gripper Arm

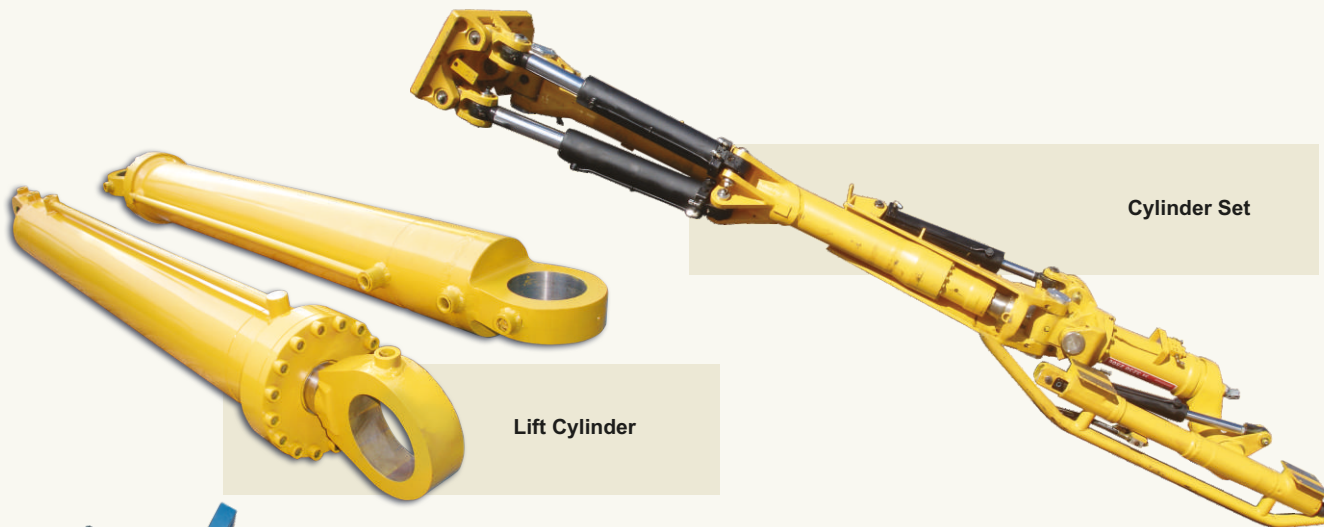


Rotator

CNC TECHNOLOGY

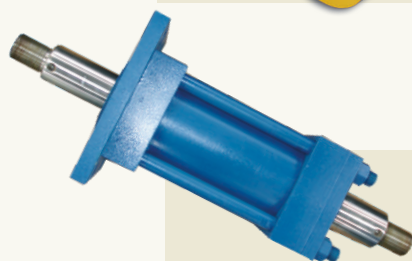


By modernizing its infrastructure and enhancing its employees, our company aims to expand its range of hydraulic products and services. We strive to keep up with the ever-changing market trends through investments in technology development and training. These efforts ensure the production of high quality products.

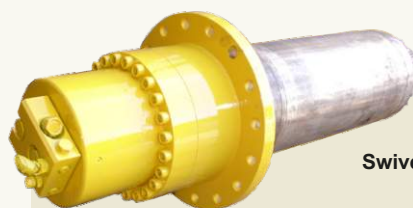


Cylinder Set

Lift Cylinder



Oven Cylinder



Swivel Fixer



Lifting Cylinder
ST 1520



Lateral Movement
Cylinderr



Magazine Indexing
Cylinder



Extensive Cylinder



Cylinder

Cylinder / Hydraulics



Hose Protection

Hydraulic hoses are commonly used in the mining industry for mobile equipment that is often exposed to severe usage and abrasives. The Hose Protection is designed to secure the outer surface of the hoses from abrasives and environmental factors. Capable of withstanding temperature variations, it has rounded edges and a smooth surface for easy assembly, wrapping the hose in a spiral, without the need to dismember the hose bundles from the equipment.



Cement Pump



Hydraulic Cylinder



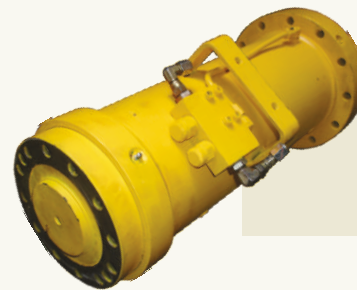
Hydraulic Cylinder



Lift Cylinder



Scale Cylinder



Rotary Actuator



Jaw Cylinder



Rotary Actuator



Transfer Engine

SPECIALIZED WORKFORCE



By consistently investing in high technology, we produce polyurethane parts that exhibit exceptional strength, durability, safety, and proven quality, without losing sight of our customer's needs.



Pulley



Segment



Pulley



Pulley



Support of
Flap



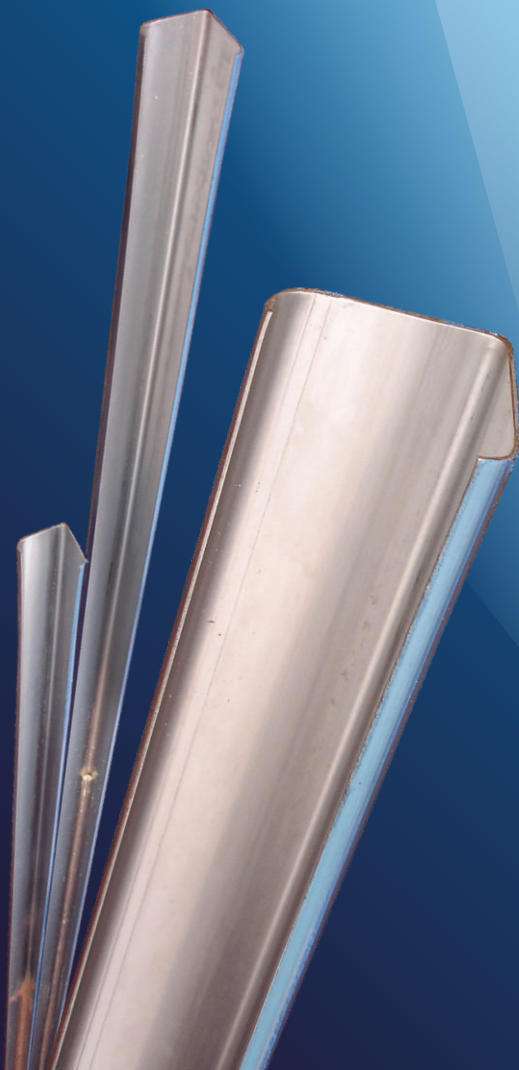
Dowel

25 YEARS OF EXPERIENCE AND COUNTING

Gutter

Gutter Length: up to 12,000 mm
Material: AISI 304 Stainless Steel
Thickness: 1.00 mm
Polished sliding area with
protective PVC coating

APPLICABLE TO THE ENTIRE JUMBO LINE



Extensive Tube

**Recovery and
manufacturing**

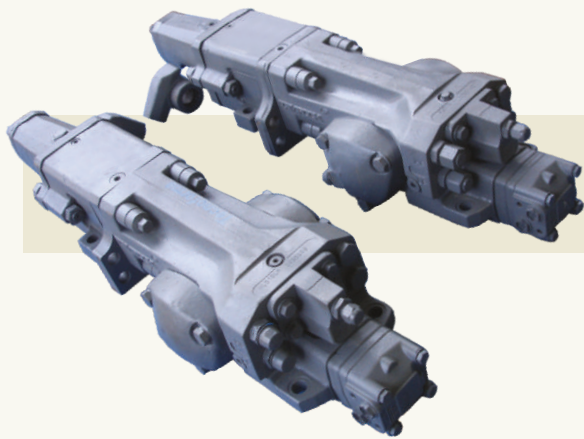


COMMITMENT AND QUICK DELIVERY



Ubertec

Recovery, Manufacturing and Nationalization.



Drill



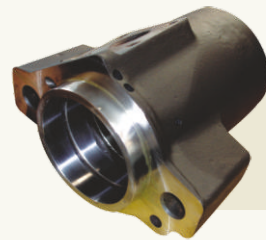
Drill



Driven Sleeve
and Splined
Mandrel



Splined
Bushing



Cylinder
Head



Drill Tie Rod



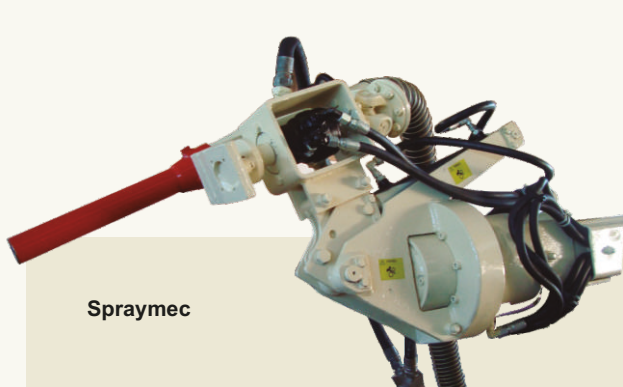
Piston

SPECIALIZED WORKFORCE



Recovery, Manufacturing and Nationalization.

Equipment with Complete Recovery



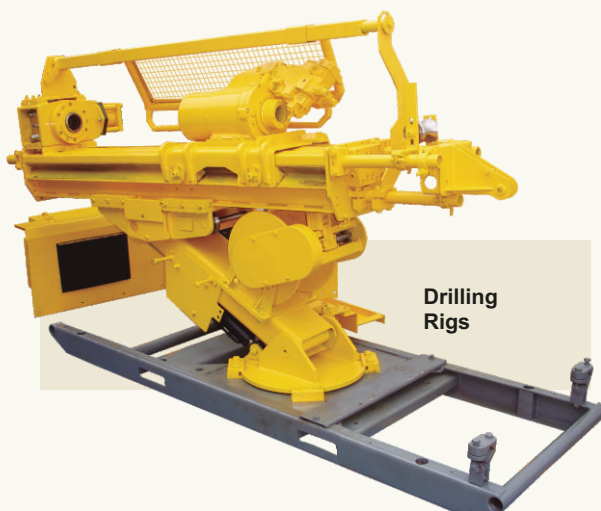
Spraymec



Jumbo



Galion



Drilling Rigs

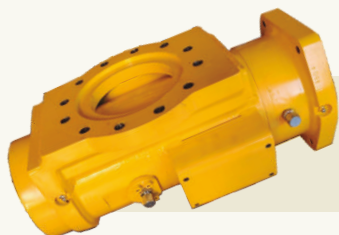
HIGH STANDARD QUALITY



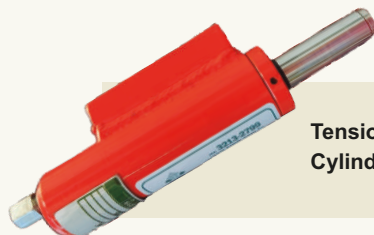
Ubertec



Equipment with Complete Recovery



Swivel
Mechanism



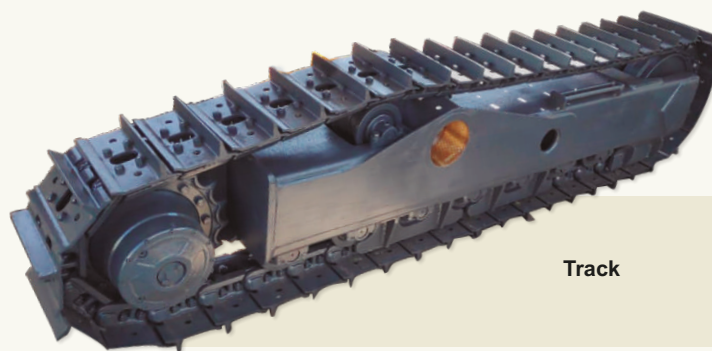
Tensioner
Cylinder



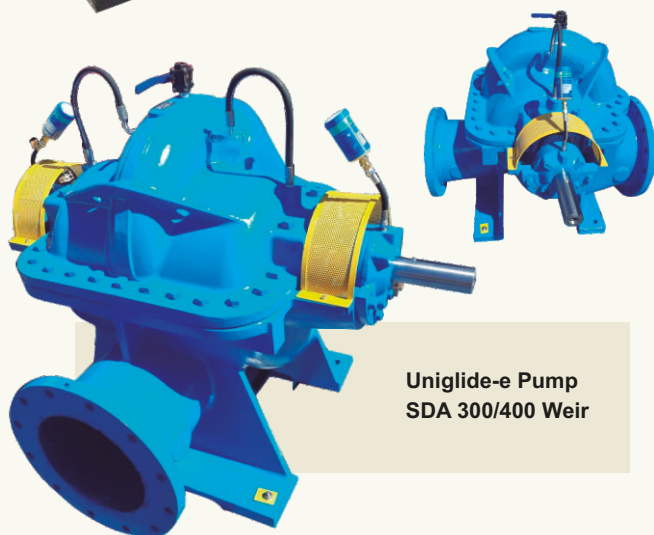
Cable
Cutter Set



Centralizing
Table



Track



Uniglide-e Pump
SDA 300/400 Weir



Pump
A10V100

HIGHLY QUALIFIED PROFESSIONALS



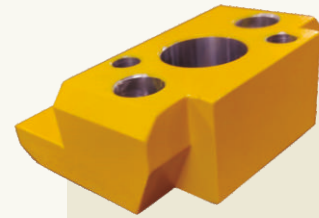
In-house Manufactured Products



Robolt
Drill
Table



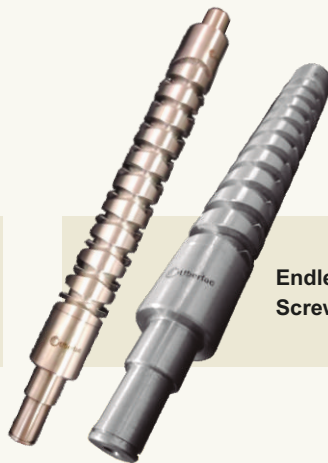
Rubber
Muff



Brake
Jaw
Drilling
Rigs



Resin
Nozzle



Endless
Screw



Jaw
Drilling
Rigs



Mandrel



Collet



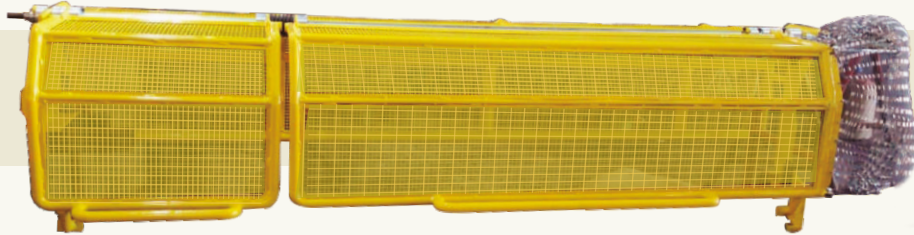
Bronze
Bushing

25 YEARS OF EXPERIENCE AND COUNTING

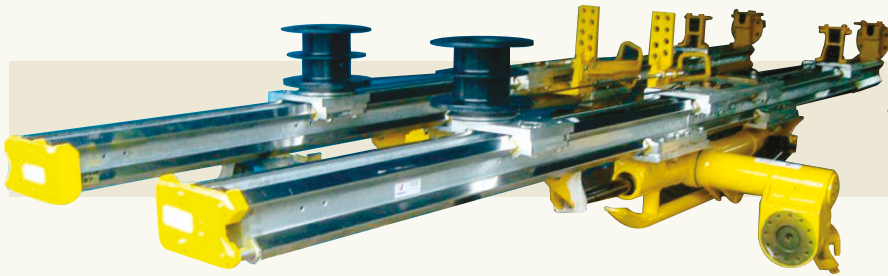


In-house Manufacturing and Recovery

Recovery, Manufacturing and Nationalization.



U6 Protection
Drilling Rig



Jumbo
Feed



Rotator/
DHR



Track



Skid Drilling
Rig



Mach
1200
Drilling
Rig

EXPERIENCE AND KNOW-HOW



Ubertec

Equipment with Complete Recovery



Conveyor
Rollers



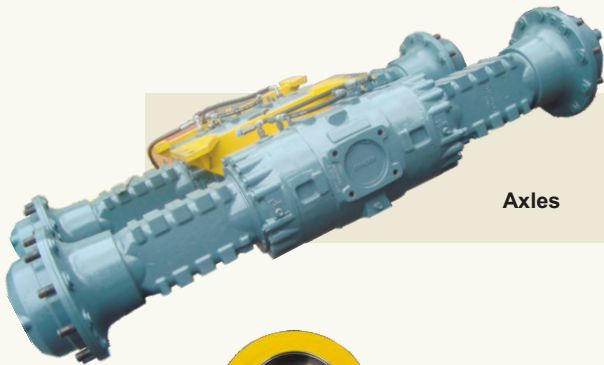
Brake Jaw
Drilling
Rigs



Bronze
Bushing



Bucket



Axles



Z Bar



Mandrel
Drilling Rigs



Mandrel



Pulleys

HIGH STANDARD QUALITY

NSA-300 DRILLING RIG

was developed for drilling at all angles, including upward drilling, with ease of handling and transportation. This equipment meets market needs of by aligning quality, versatility, reliability, mobility, and excellent cost-effectiveness.



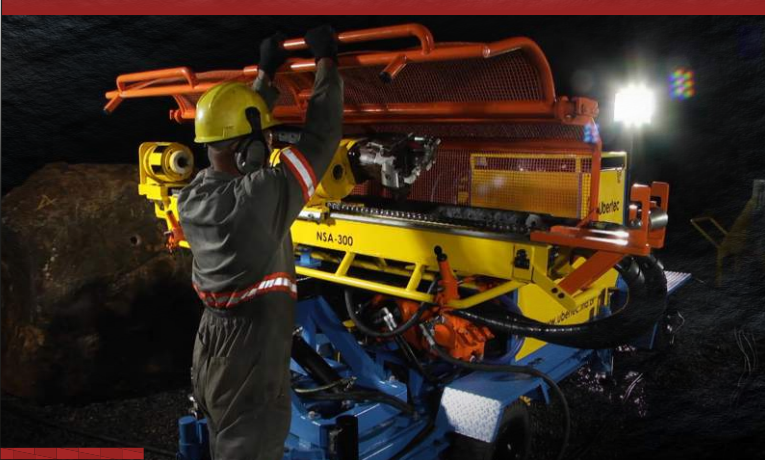
Ubertec®

PRESENTATION

NSA-300 DRILLING RIG



EASY OPERATION AND TRANSPORTATION



Highlights:

- Compact design
- Control panel on the chassis
- Easy to transport
- Can be used on the surface
- Performs upward drilling (at 90°)
- Safety protections on rotating units



Ensuring increased productivity and reduced operating costs

NSA-300 DRILLING RIG

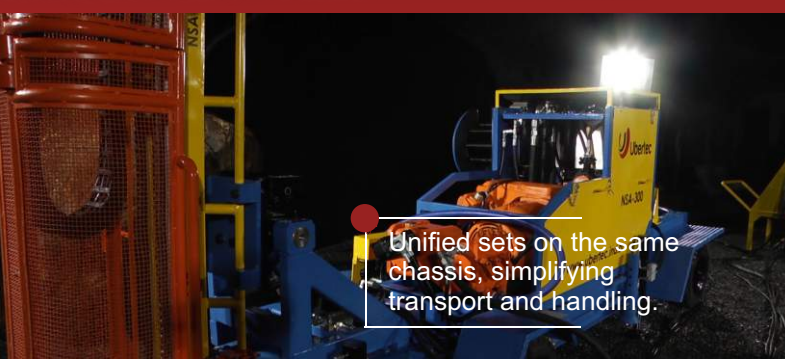


The NSA-300 DRILLING RIG is not just a high-performance and high-quality equipment; it is a comprehensive solution that comes with assisted partnership. It will contribute to the continued success of your drilling process.



The NSA-300 DRILLING RIG is an extremely powerful compact version where the entire set of boom, generator, pumps, and motors is housed on a single chassis, allowing easy transportation.

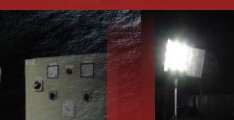
SINGLE CHASSIS



Unified sets on the same chassis, simplifying transport and handling.



Boom Assembly | Generator Pumps | Motors



DRILLING UNIT

The drilling boom can be moved within a 180° radius, which allows the equipment setup to be performed by a single operator, both in horizontal and vertical drilling or any position in between.

Drilling Unit Components:

- Boom
- Rotary unit
- Brake unit



DRILLING UNIT

BOOM

- Reinforced structure
- Reel for rod support
- Extended lifespan
- Hose protection
- Easy installation

BRAKE UNIT

- Brake activated by pressurized nitrogen gas.
- Increased clamping force
- Extended lifespan
- Easy handling and maintenance

ROTATING UNIT

- Increased drilling capacity
- Lower heat generation
- Higher torque
- Extended lifespan
- Enhanced structural reinforcement

POWER UNIT

HYDRAULIC PANEL

Simplified Commands

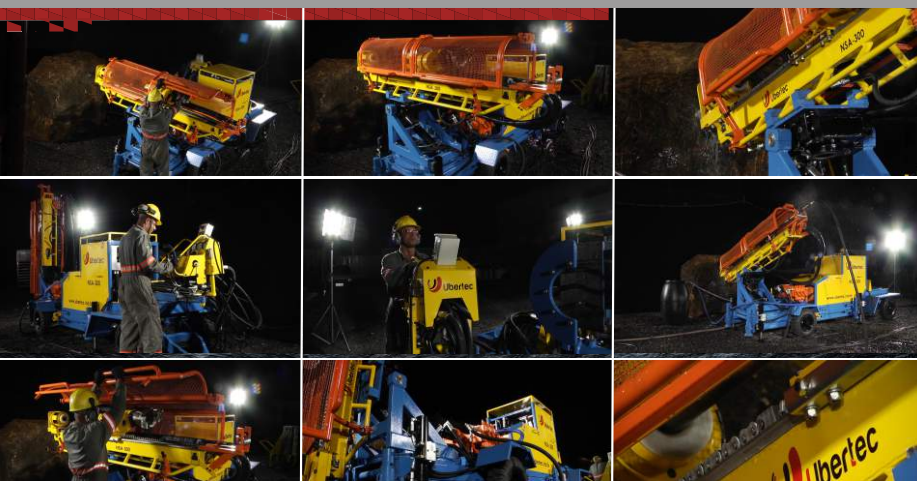
Synchronized System
Allows numerous actions
Single drive

PISTON WATER PUMP

Capacity of 100 liters per minute
Maximum pressure of 70 bar

Chassis mounted unit

Hydraulic water pump on the control panel.



NSA-300 DRILLING RIG

Technology developed in Brazil providing greater competitiveness.

Ubertec[®]

NSA-600 DRILLING RIG was developed for drilling in all angles, including upward drilling, with ease of handling and transportation. The units are mounted on wheels.

The subassemblies that make up the NSA-600 DRILLING RIG are:

- Power Unit
- Drilling Unit
- Boom
- Rotary Unit
- Cable Reel
- Brake Unit
- Hydraulic Panel
- Water Pump

Genuinely Brazilian equipment



Ubertec®

PRESENTATION

**NSA-600
DRILLING RIG**



EASY OPERATION AND TRANSPORTATION



The NSA-600 DRILLING RIG has separate subassemblies that facilitate its movement and operation.

Drills holes from all angles, including upwards, with ease.

The NSA-600 DRILLING RIG was designed to be easy to handle and transport. It can be operated by one person.

**NSA-600
DRILLING RIG**

SEPARATE POWER UNIT



- Mobile chassis on wheels
- 75hp electric motor
- Electrical panel
- Temperature sensors
- Oil level sensors
- Power supply points 440vac, 220vac and 24vdc.
- Dual pumps 100cc and 45cc



DRILLING UNIT

- Mobile through wheels
- Pantographic elevator
- Ascending gallery drilling
- Retractable hydraulic outriggers



DRILLING UNIT



BOOM

- Reinforced structure
- Reel for rod support
- Extended lifespan
- Hose protection
- Easy installation



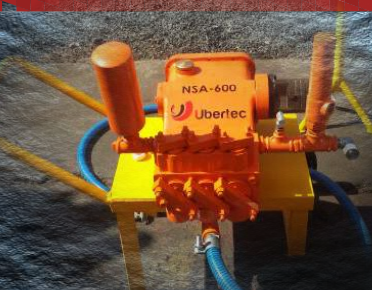
BRAKE UNIT

- Brake activated by pressurized nitrogen gas.
- Increased clamping force
- Extended lifespan
- Easy handling and maintenance



ROTATING UNIT

- Increased drilling capacity
- Lower heat generation
- Higher torque
- Extended lifespan
- Enhanced structural reinforcement



PISTON WATER PUMP

Hydraulic driven water pump activated on the control panel.

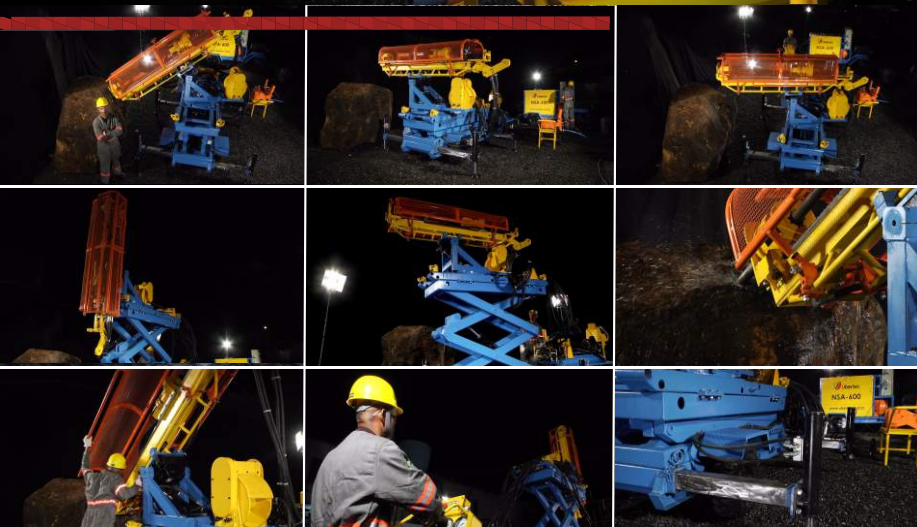
Capacity for 100 liters per minute
Maximum pressure of 70 bar
Mounted on mobile chassis



CONTROL PANEL

Simplified commands

Synchronized system
Allows numerous actions
Single drive



NSA-600 DRILLING RIG

Technology developed in Brazil providing greater competitiveness..



Ubertec®



Ubertec projects



Another Ubertec development.

SKID
Drilling Rigs
Genuinely Brazilian



Carrier ANCHOR
for Drilling Rigs 232 e 252

NSA 200^{AB}
Drilling Rigs
Genuinely Brazilian



◆ Hose Reel

◆ Rotative Unit

◆ Control Panel

◆ Roof and Ground
Shoring Column

**THE EVOLUTION
OF DRILLING RIGS**
HAS ARRIVED ON THE MARKET

DRILLS UP TO
400M
AT ANY ANGLE



DRILLING RIGS NSA 200



Ubertec
Mining Solutions

◆ Carrier
Anchor

◆ Hydraulic Power
Unit

◆ Break Unit

◆ Piston Water Pump

◆ Hydraulic
Outriggers



THE EVOLUTION OF DRILLING RIGS HAS ARRIVED ON THE MARKET

NSA400
Drilling Rigs
Genuinely Brazilian



**DRILLS UP TO
400M
AT ANY ANGLE**

◆ Break Unit

◆ Piston Water Pump

◆ Hydraulic
Outriggers

◆ Hose Reel

◆ Rotative Unit

◆ Control Panel

◆ Roof and Ground
Shoring Column

◆ Carrier
Anchor

◆ Hydraulic Power
Unit



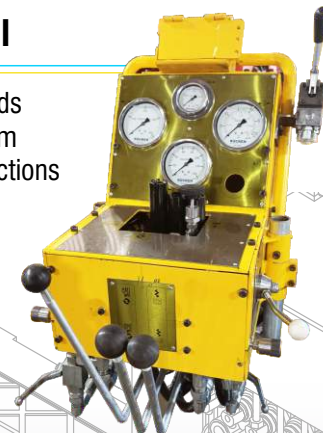
◆ Piston Water Pump

Hydraulic driven water pump
on the command panel
Capacity for 100 liters per minute
Maximum pressure of 70 bar
Mounted on mobile chassis



◆ Control Panel

Simplified commands
synchronized system
Allows numerous actions
single drive



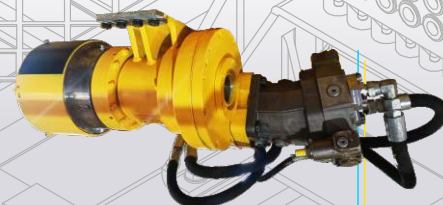
◆ Hydraulic Power Unit

Separate power unit
mobile chassis
75hp electric motor
Electric panel
Temperature and oil level sensors
440vc, 220vc and 24vdc power points
100cc and 45cc dual pump



◆ Rotative Unit

Greater drilling capacity
Lower heating
higher torque
extended lifespan
Greater structural reinforcement



◆ COMPACT

◆ ROBUST

◆ SAFE

◆ EASY TO TRANSPORT AND MOVE

◆ DRILLS AT ALL ANGLES

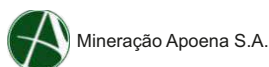
Main customers



YAMANA GOLD
Jacobina Mineração e Comércio Ltda.



Ferbasa



+55 34 99919-0099
+55 34 3211-3799
comercial2@ubertec.ind.br
www.ubertec.ind.br
/ubertecservice
@ubertecservice
Adress: 1303 Amazonas Ave.
Neighborhood: B. Brasil
Postal code: 38.400-734
City: Uberlândia-MG



9001

In process
implantation
ISO 9001



Ubertec[®]
Mining Solutions.