



Ubertec[®]

Mining Solutions.



www.ubertec.ind.br

Reforms

Spare parts

Special projects

Manufacturing



UBERTEC is a company specialized in the development, manufacture, nationalization, recovery of parts for machinery and equipment domestic and imported, in the mining segment.



OUR VISION

To be a reference in the national and international market, focused on mining and industry segment, providing solutions innovators with operational excellence.

OUR MISSION

Offer innovative solutions with operational excellence, focused on mining and industry segment, exceeding the expectations of our customers.

OUR VALUES

Innovation
Operational Excellence
Quality
Security
Ethic
Sustainability

+5800

Budgets

+190

Customers

+159

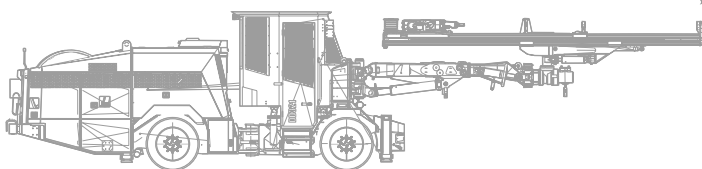
Collaborators

+25

Years of experience



1°



➤ With the equipment catalog in hand, locate the PN, Machine Brand and Models.

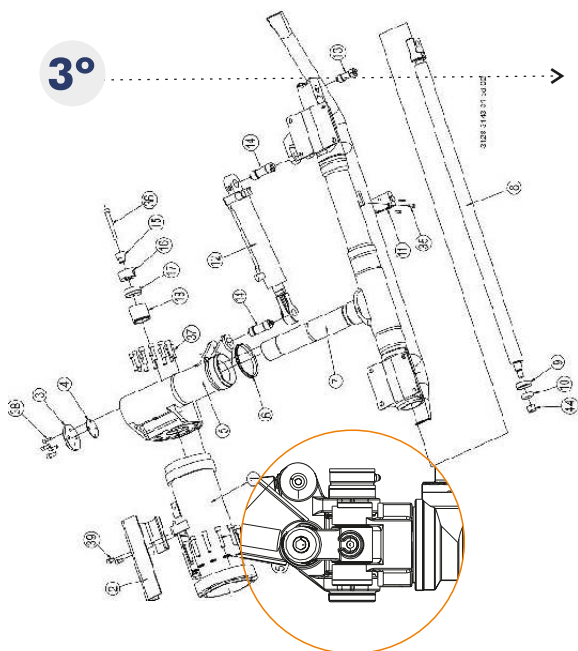
BOOM / BOM

Ref no	Part no Detaljn	Antal
131	3128 3144 26	1
132	3128 3144 27	1
150	-	1
151	-	1
161	-	-
162	-	-

2°

Inform Ubertec of the PN of the Equipment, its Brand, Model.

3°



➤ After identifying the equipment, send the list of PN of subassembly components to be recovered or manufactured.

RT / BOMDEL

no	Part no Detaljn	Ant
1	3128 3126 44	1
2	3128 3140 86	1
3	3125 4941 00	1
4	3125 4924 00	1
5	3128 3146 44	1
6	0666 8096 03	-
7	3128 3141 63	-
8	3128 2592 43	-
9	3153 8650 00	-
10	3122 0309 00	-

4°

➤ If you need, you can consult our ONLINE portfolio at www.ubertec.ind.br and get the PN number of each ask and send us.

If you can't find the description or the desired PN, enter contact with our department commercial at comercial2@ubertec.ind.br

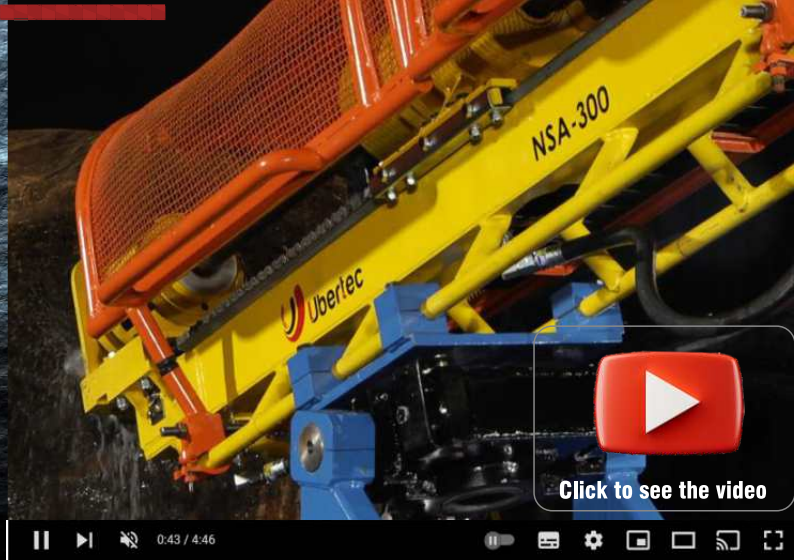




Ubertec®

PRESENTATION

MACHINE DRILLING NSA-300



Click to see the video

0:43 / 4:46

EASY OPERATION AND TRANSPORTATION



Emphasis:

- Compact
- Control panel on the chassis
- Easy to carry
- Can be used on the surface
- Drills hole in the ascendant (at 90°)
- Protections on rotating units



Ensuring increased productivity and reduced operating costs

MACHINE DRILLING NSA-300

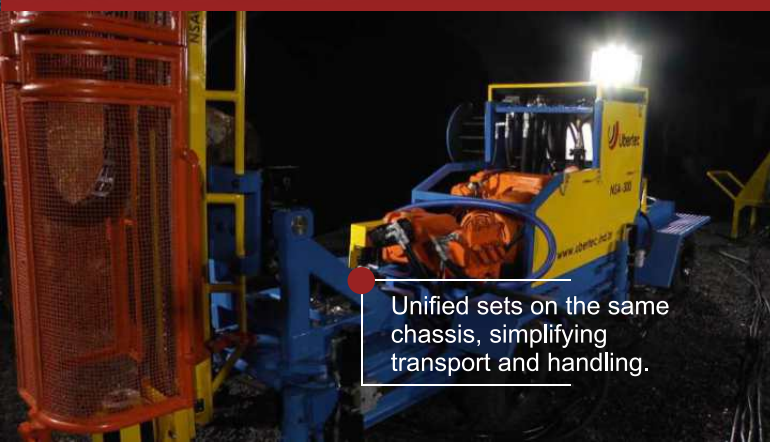


MACHINE DRILLING NSA-300 is much more than high-performance and quality equipment, it is a set of solutions with an assisted partnership, which will contribute to the continued success of your drilling process.



The MACHINE DRILLING NSA-300 is an extremely powerful compact version, the whole boom, generator, pumps and motors are packed on a single chassis, allowing for easy transport.

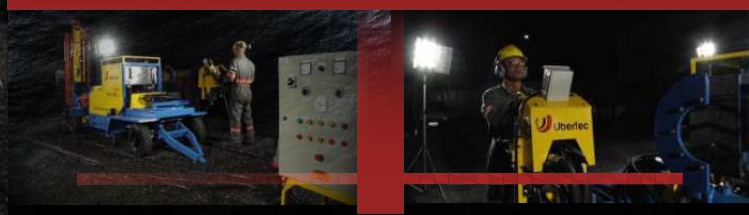
SINGLE CHASSIS



Unified sets on the same chassis, simplifying transport and handling.



Feed Set | Generator Pumps | Engines





DRILLING UNIT

The movement of the drilling boom can be done within a radius of 180°, which allows the equipment to be set up by only 01 operator, whether in horizontal, vertical drilling or between the two positions.

Drilling Unit Components:

- Feed
- Rotary unit
- Brake unit



DRILLING UNIT

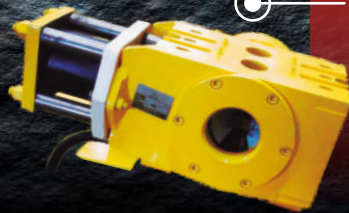
FEED

- Reinforced structure
- Spool for rod support
- Longer service life
- Hose protection
- Simple installation



BRAKE UNIT

- Brake actuated by pressurized nitrogen gas.
- Greater clamping force
- Longer service life
- Easy handling and maintenance



ROTATING UNIT

- Greater drilling capacity
- Lower heating
- Higher torque
- Extended service life
- Greater structural reinforcement



POWER UNIT

HYDRAULIC PANEL

Simplified Commands

Synchronized System
Allows numerous actions
Single drive



PISTON WATER PUMP

Capacity for 100 liters per minute
Maximum pressure of 70 bar

Chassis mounted unit



Hydraulic water pump on the control panel.



MACHINE DRILLING NSA-300

Technology developed in Brazil providing greater competitiveness.



Ubertec®



MACHINE DRILLING NSA-600 was developed for drilling in all angles, including ascending, with ease of locomotion and transport, the units are on wheels.

The subsets that make up the **MACHINE DRILLING NSA-600** will be presented:

- Power Unit
- Drilling Unit
- Feed
- Rotary Unit
- Cable Reel
- Brake Unit
- Hydraulic Panel
- Water Pump

Genuinely Brazilian equipment

Click to see the video



Ubertec®

PRESENTATION

**MACHINE DRILLING
NSA-600**

EASY OPERATION AND TRANSPORT



The MACHINE DRILLING NSA-600 has separate subassemblies that facilitate its movement and operation.

Drills holes from all angles, including upwards, with ease.

The MACHINE DRILLING NSA-600 was designed to be easy to handle and transport. It can be operated by one person.

**MACHINE DRILLING
NSA-600**

SEPARATE POWER UNIT



- Mobile chassis on wheels
- 75hp electric motor
- Electric panel
- Temperature sensors
- Oil level sensors
- Power points 440vac, 220vac and 24vdc.
- 100cc and 45cc dual pump



DRILLING UNIT

- Mobile on wheels
- Pantograph elevator
- Ascending gallery drilling
- Retractable hydraulic outriggers



DRILLING UNIT



FEED

- Reinforced structure
- Spool for rod support
- Longer service life
- Hose protection
- Simple installation



BRAKE UNIT

- Brake actuated by pressurized nitrogen gas
- Greater clamping force
- Longer service life
- Easy handling and maintenance



ROTATING UNIT

- Greater drilling capacity
- Lower heating
- higher torque
- extended service life
- Greater structural reinforcement



PISTON WATER PUMP

Hydraulic water pump activated on the control panel.



Capacity for 100 liters per minute
Maximum pressure of 70 bar
Mounted on mobile chassis



CONTROL PANEL

Simplified commands

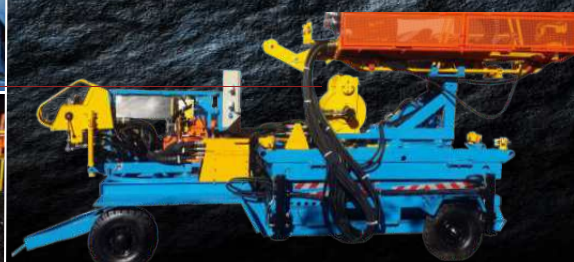
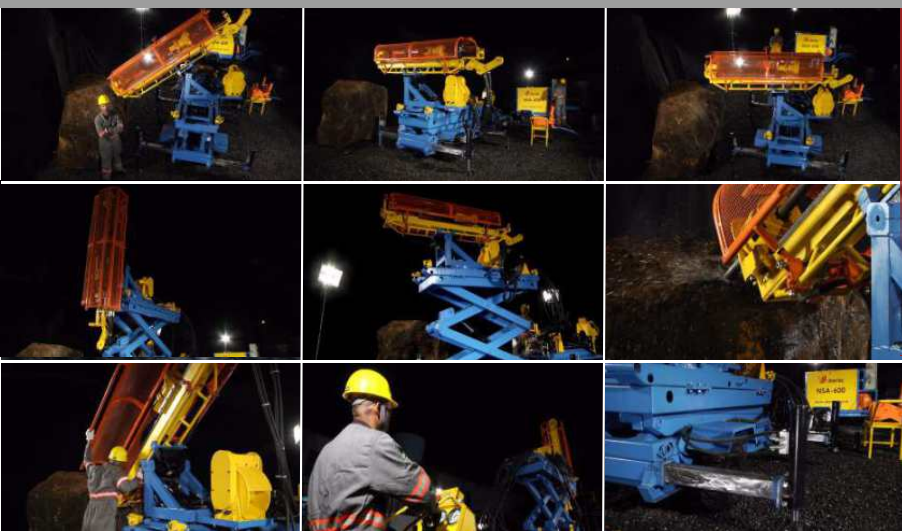
Synchronized system
Allows numerous actions
Single drive

MACHINE DRILLING NSA-600

Technology developed in Brazil providing greater competitiveness..

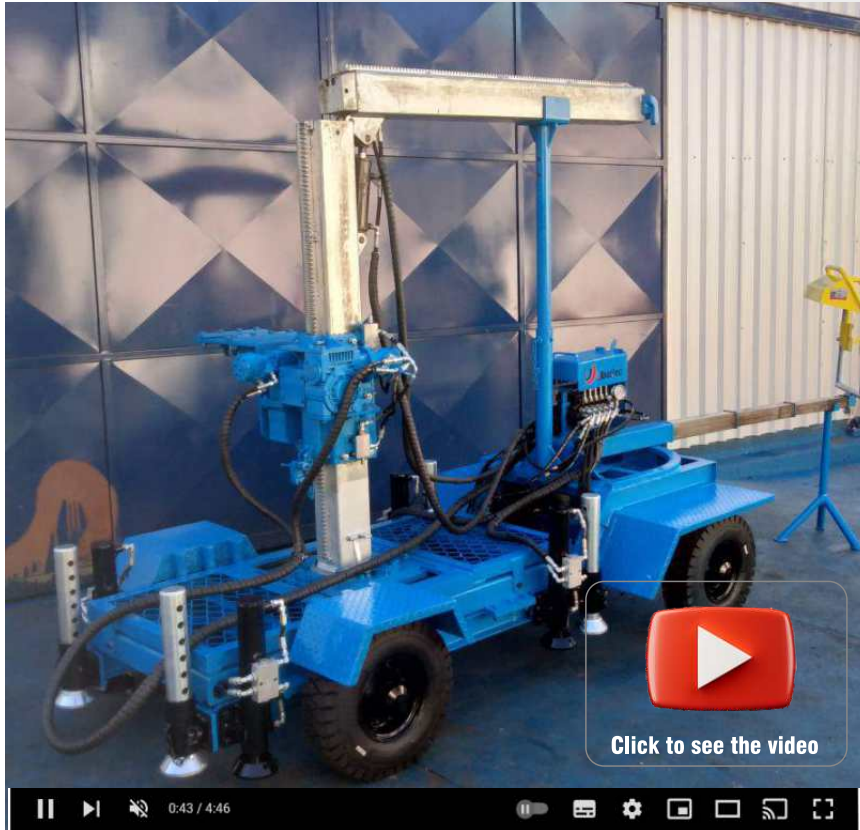


Ubertec®



Skid for MACHINE DRILLING 232 and 252

Another Ubertec development.



MODERN INDUSTRIAL PARK AND INTEGRATED LOGISTICS

State-of-the-art machines and INTEGRATED LOGISTICS WITH THE CAPACITY TO SERVE QUICKLY AND EFFECTIVELY THROUGHOUT THE national and international TERRITORY



Main customers



YAMANA GOLD

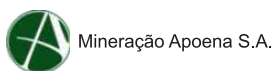
Jacobina Mineração e Comércio Ltda.



TÚNEIS, TERRAPLENAGENS E PAVIMENTAÇÕES



Ferbasa



+55 34 99919-0099

+55 34 3211-3799

comercial2@ubertec.ind.br

www.ubertec.ind.br

/ubertecservice

@ubertecservice

Av Amazonas, 1303 | B. Brasil | Cep: 38.400-734 | Uberlândia-MG



Ubertec®